

Instructions for 4 route 86mm size DC receiver system V1.0.1



4 route 86mm size DC receiver



AC123transmitter with touch screen

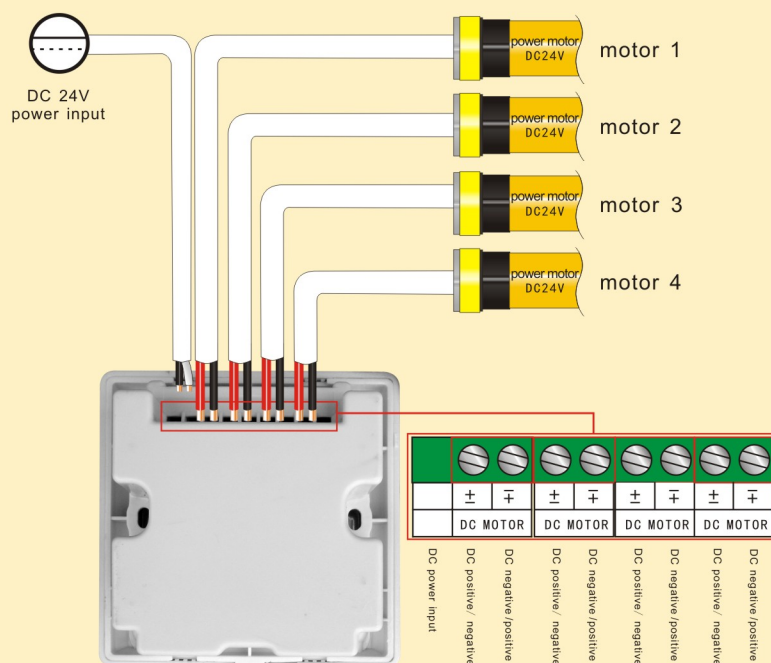
I. Features

- Work with 4pcs DC power tubular motor;
- Built-in silver screen printing button ,beautiful and lasting
- Anti-scratches acrylic surface,built-in lamp light guide soft and well-distributed
- Roast piano lacquer frame,noble and elegant.
- SMT machine automatic assembly in dampproof enclosure.
- Construction complies for the CB standard fire class requirement;
- Power supply protection, power output time 5 minutes;
- Shock-proof relays

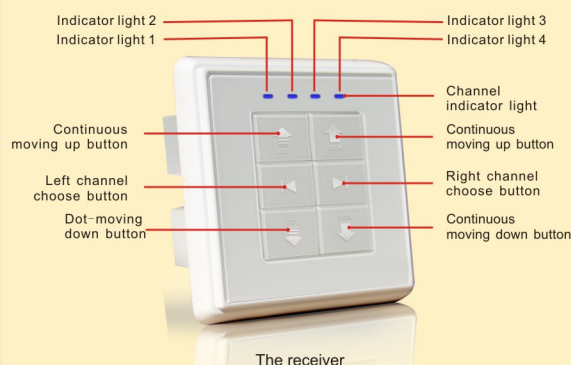
II. Parameter

Model NO.	Input voltage	Working temperature	Loading power	Receiving frequency	Receiving sensitivity	Transmitters quantity allowed	Operation
4 route 86mm size DC receiver	DC24V	-40℃~+85℃	≤ 24Wx4	433.92MHz	-110dBm	single route≤20 double route≤20	remote/manual

III. Installation and wiring



Ac123transmitter with touch screen



The receiver



Installation Note

Besides the Standard of Electric Safety,please follw :

- Do not install the receiver in or too close to any metallic parts or it will affect the receive distance;
- Effective signal distance:80m in open area;
- Minimum distance between the Receiver and the floor:1.5m;
- Minimum distance between the Receiver and the roof:0.3m;
- Minimum distance between the Receiver and the transmitter:0.2m;
- Make sure the power has been cut off before wiring to ensure safety;
- Avoid static disturbance which could damage electronic components;
- Use flexible cables;
- Ensure no longitudinal force is acting on cables after installation.

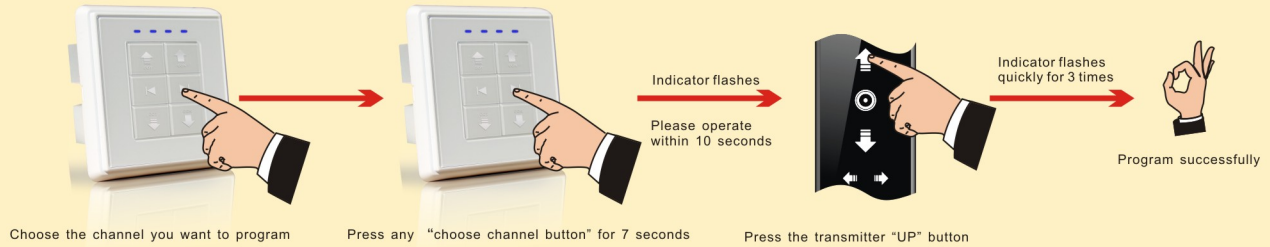


Open environment of wireless transmission distance of 60 m

IV. Installation instruction

* 5Mins is the longest operation time for motor. * 0.5S to transfer for up/down for motor.
* Please choose the channel firstly when the transmitter is multi-channel

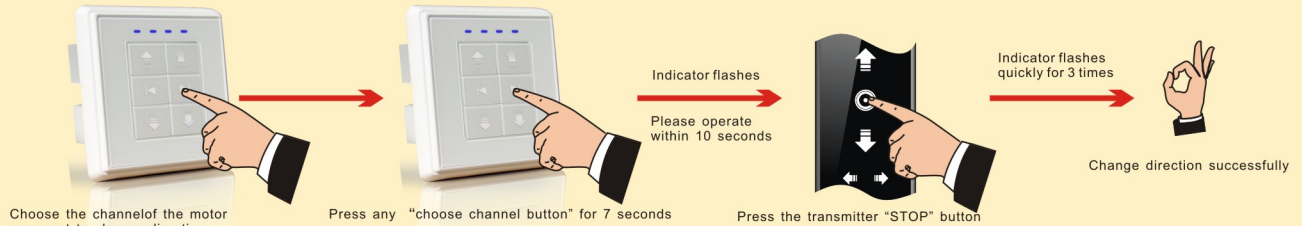
1. Programming



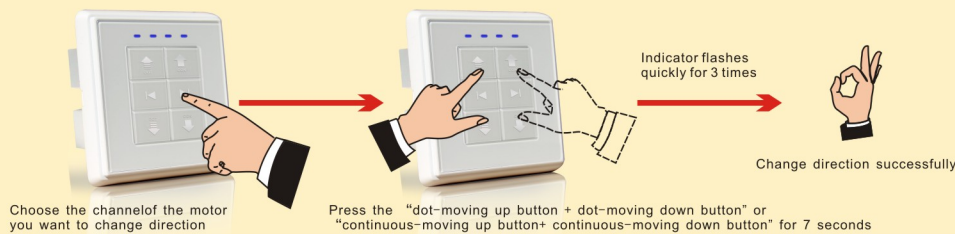
2.Direction covention

*If the motor operates in a correct direction,no need to do the covention,if not ,it is necessary.

Transmitter direction conversion

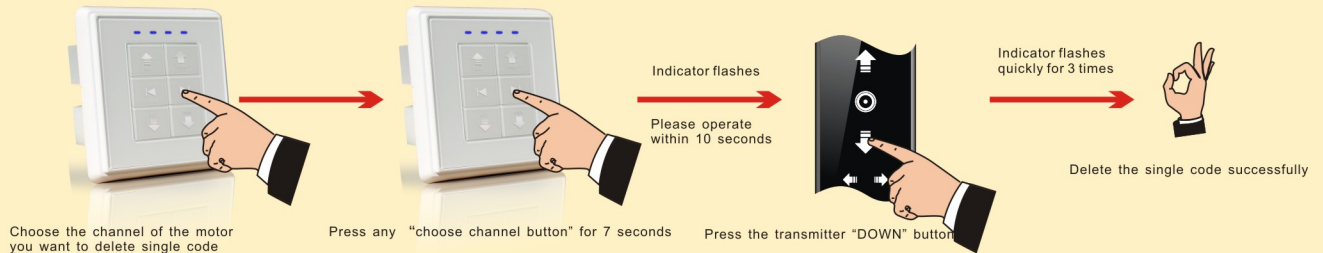


Receiver direction conversion



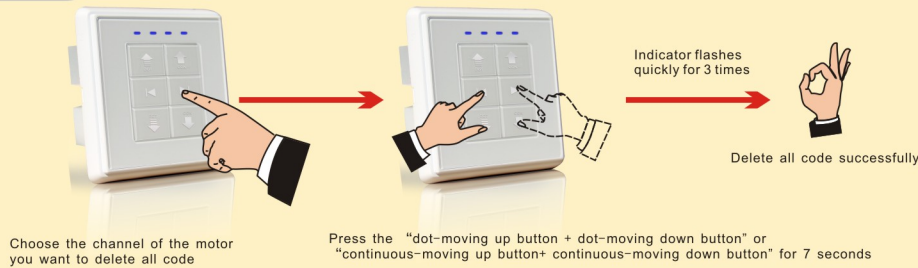
3.Delete single code

*The single channel memory on the transmitter will be deleted after operation



4.Delete all codes

*All memories on the receiver will be all deleted after operation



V.Trouble and shootings

No.	Performance	Checking point
1	Indicator on receiver do not light	Please check wiring connection receiver
2	Indicator on transmitter do not light or poor light	Please check the battery power and installation
3	Transmitter and receiver work commonly,but motor has no rotaing	Please check motor wiring